



NEWSLETTER

8th April 2024

Telephone 0121 464 2705

Note from the Head

Dear Parents and Carers,

We welcome you back after the Easter break and trust you had a restful time away from school.

This week brings two wonderful festivals for a number of our families. For Muslims, Eid Al Fitr and will be celebrated this week. On Saturday 13th April, Sikh families will be celebrating Vaisakhi. May we wish all families celebrating over coming days a wonderful time. These celebrations will be discussed in school this week.

Now we have returned from the Easter holidays, please can I remind families to ensure that children arrive on time for the start of the school day and wherever possible ensure that attendance remains high for pupils.

Kindest regards,

Mr N Whitehouse

Attendance News

Attendance for the week 18th-22nd Mar 2024

<u>Year Group</u>	<u>Percentage</u>	<u>Lates</u>
Reception	92.4%	5
Y1	92.6%	9
Y2	92.3%	9
Y3	87.8%	5
Y4	91.3%	7
Y5	95.4%	8
Y6	90.1%	5

Early Birds are ready to Learn

Our doors open at 8.50am and any child arriving between 8.50am and 9.00am is "on time." Different classes have different morning routines but the time between 8.50am and 9.00am is never "dead time"... it may be used for reading, for skills practice or for some pupils to have a quick personal conference with the teacher about something they found difficult yesterday. Some classes start with a quick written "early work" task in books or on whiteboards. Others may use the interactive screen to share a song that helps practice number bonds, times tables, phonics or topic vocabulary. New learning will not start before 9.00am but these ten minutes are useful for reinforcement and revision. So please aim for 8.50am arrival so your child gets access to this extra 50 minutes every day of every week. As a well known supermarket says... "every little helps". It also makes it less likely that you will arrive after the 9am deadline and fall into the "late" category as even 9.01am means a late mark for your child on the register.



2024 Key Stage 2 Assessment and Reporting Arrangements

Key Stage Two SATs (Standard Assessment Tests)

Calling all Year Six parents!

We will be hosting a parents' meeting on:

Wednesday 17th April at 9am in the Main Site Studio.

Come along and find out how we are preparing your child for their SATs, what happens in SATs week and ways you can support your child.

We look forward to seeing you there, if you are unable to make it, we will be sharing the slides on the Year Six page of the school's website.

Mrs Khand and Mrs Preddy

Spring Art Competition

We are holding another whole school art competition - this time titled 'Spring Has Sprung.' Please see the poster for more details and we very much look forward to seeing your hard work after the Easter Break. Thank you. Mrs Jesson.



Leave of Absence

Can you please make sure that if your child is going to be off school that you complete a Leave in Term Time Form. If it is to go overseas, it is imperative that travel documents/flight details are attached to this form. This form can be downloaded from our school website or you can collect a copy from either of the school offices. Thank you.



Commitment to equality, diversity and inclusion

As you know, we are very lucky to enjoy a broad and culturally diverse community here at Harborne Primary School. By valuing diversity of ideas and experience, our children are able to share and learn about many different faiths and cultural backgrounds. We are aware, today more than ever, how important it is that our children learn about, and are respectful of this rich diversity. In response to a parental question, we have been thinking about how we ensure all our children, staff and parents feel valued and respected at Harborne Primary School. As you know, we follow the SACRE Religious Education syllabus which teaches our children about 9 main faith groups and 4 non-religious world views. We also follow The Birmingham Approach which supports us to deliver our statutory responsibilities for Relationships and Health Education.

In the Summer and upcoming Autumn terms we are scheduled to revisit PSHE education, (Personal, Social, Health, Economic) and we will be placing equality, diversity and inclusion at the heart of this work. We will be consulting with children, staff and parents. Please watch out for details in the Newsletter over the next two terms.

Until then, we trust that our whole school community continues to share a commitment to respecting all 9 of the protected characteristics outlined in the 2010 Equality Act.

We aspire to be a school in which difference and diversity is truly celebrated, but we expect to be a school in which such diversity is respected by our entire school community.

<https://www.gov.uk/discrimination-your-rights>



Dates in the Diary

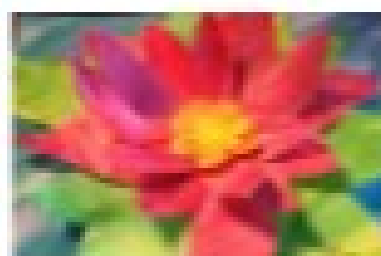
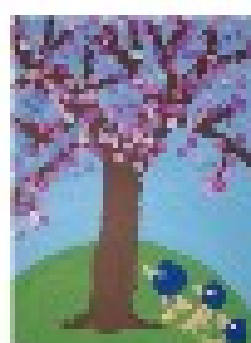
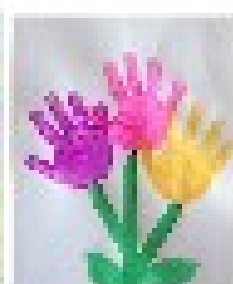
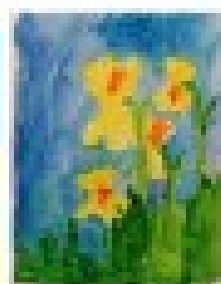
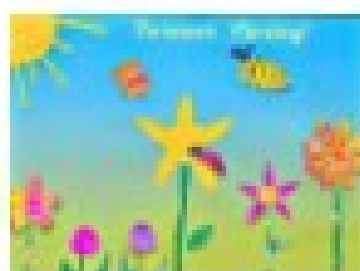
Mon 8th Apr	School re-opens for all children
Fri 12th Apr	5C/5BC Walking to Lordswood Boys School
Wed 17th Apr	9.00am — Y6 Sat's meeting to parents (MS Studio)
Fri 19th Apr	5B/5M — Walking to Lordswood Boys School
Thurs 2nd May	TED Day
Mon 20th May	Y3 Woodlands Camp Trip
Tues 21st May	9.30-11am - New Reception Intake Stay & Play (Main Site)
Tues 21st May	5BC/5C — Think Tank
Wed 22nd May	9.00am-Y6 Residential Meeting with parents (studio main site)
Thurs 23rd May	Y3 Woodlands Camp Trip
Thurs 23rd May	9.30-11am — New Reception Intake Stay & Play (Annex)
Thurs 23rd May	1.30-3pm — New Reception Intake Stay & Play (Main Site)
Thurs 23rd May	5LM/5B — Think Tank
Fri 24th May	Last Day of Term
Mon 3rd Jun	School re-opens for all children
5th-6th June	Y2 Kingswood Residential Trip
10th-14th June	Y6 Oakerwood Residential Trip
12th-13th June	Y2 Kingswood Residential Trip
Tues 25th June	REC Trip to Mount Pleasant Farm
Thurs 27th June	REC Trip to Mount Pleasant Farm
Mon 1st July	Y1 Think Tank Trip



Achievement Assembly Certificate Winners — w/e 22/04/2024

No achievement assemblies this week.

Harborne Primary Spring Term



Join in Harborne's Spring Art Competition

To enter, you will need to create a 'Spring Scene' using any art resources you have at home.

Please give in your completed work to your class teacher by **Monday 15th of April.**